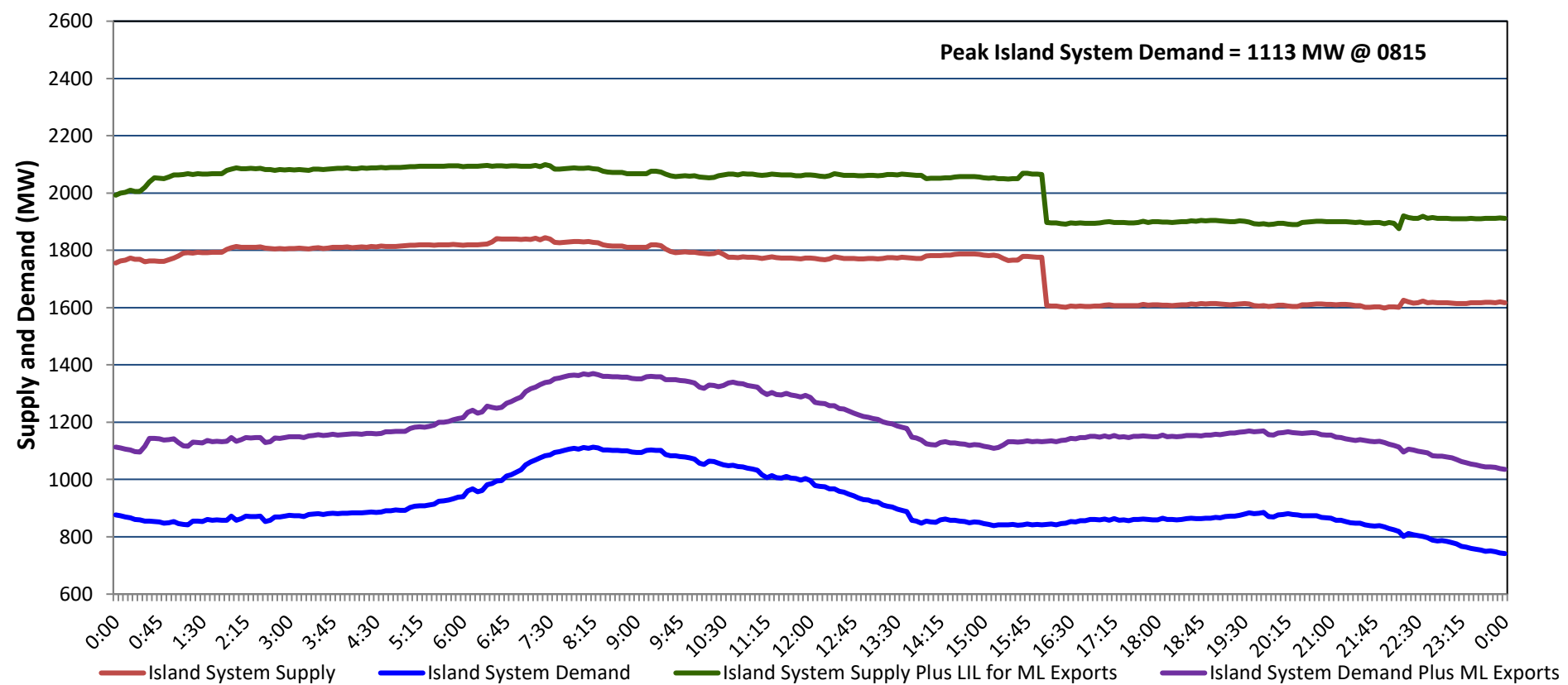


# Newfoundland Labrador Hydro (NLH) Supply and Demand Status Report Filed Monday, March 24, 2025

## Section 1 Island Interconnected System - Supply, Demand & Exports Actual 24 Hour System Performance For Friday, March 21, 2025



### Island Supply Notes For March 21, 2025

- 1
- A As of 0952 hours, March 11, 2025, Granite Canal Unit available at 32 MW due to forced derating (40 MW).
  - B As of 0915 hours, March 16, 2025, Bay d'Espoir Unit 6 unavailable due to planned outage (76.5 MW).
  - C As of 0902 hours, March 20, 2025, Holyrood Unit 3 available but not operating 130 MW (150 MW).
  - D At 1359 hours, March 21, 2025, Labrador Island Link available at 450 MW due to forced derating (700 MW) - Monopole.
  - E At 1601 hours, March 21, 2025, Holyrood Unit 1 available but not operating (170 MW).
  - F At 2210 hours, March 21, 2025, Labrador Island Link available at full capacity (700 MW) - Bipole.

## Section 2 Island Interconnected System - Supply, Demand & Outlook

Sat, Mar 22, 2025	Island System Outlook <sup>2</sup>	Seven-Day Forecast	Island System Daily Peak Demand (MW)	
			Forecast <sup>8</sup>	Adjusted <sup>6</sup>
Island System Supply: <sup>4</sup> 1,623 MW NLH Island Generation: <sup>3,7</sup> 1,290 MW NLH Island Power Purchases: <sup>5</sup> 110 MW NP and CBPP Owned Generation: 210 MW LIL/ML Net Imports to Island: <sup>9</sup> 13 MW 7-Day Island Peak Demand Forecast: 1,335 MW		Saturday, March 22, 2025	1,005	913
		Sunday, March 23, 2025	1,090	997
		Monday, March 24, 2025	1,235	1,141
		Tuesday, March 25, 2025	1,335	1,240
		Wednesday, March 26, 2025	1,180	1,086
		Thursday, March 27, 2025	1,230	1,136
		Friday, March 28, 2025	1,210	1,116

### Island Supply Notes For March 22, 2025

- Notes:
1. Generation outages for running and corrective maintenance are included. These are not unusual for power system operations. They generally do not impact customer supply. Hydro schedules outages to system equipment whenever possible to coincide with periods when customer demands are low and sufficient supply reserves are available. However, from time to time equipment outages are necessary and reserves may be impacted.
  2. As of 0800 Hours.
  3. Gross continuous unit output.
  4. Gross output from all Island sources (including Note 3).
  5. NLH Island Power Purchases include: ML Imports, Exploits Generation, Rattle Brook, Star Lake, Wind Generation and capacity assistance (when applicable).
  6. Adjusted for interruptible load and the impact of voltage reduction when applicable.
  7. Due to limitations inherent in the design of combustion turbines, the output of combustion turbines may be reduced in the event that ambient temperatures exceed the threshold required for full rated output. This threshold is dependent on the design of each turbine.
  8. Does not include ML Exports.
  9. LIL Import sunk in the Island System. Actual LIL flows will be restricted by various system conditions including, but not limited to, Island Load, ML Exports and Avalon Unit status.

## Section 3 Island Peak Demand and Exports Information Previous Day Actual Peak and Current Day Forecast Peak

Fri, Mar 21, 2025	Island Peak Demand <sup>10</sup>	8:15	1,113 MW
	Exports at Peak		257 MW
	LIL Net Imports to Island		409 MWh
Sat, Mar 22, 2025	Forecast Island Peak Demand		1,005 MW

- Notes: 10. Island Demand is supplied by NLH generation and purchases, LIL Imports plus generation owned and operated by Newfoundland Power and Corner Brook Pulp & Paper (Deer Lake Power, DLP).